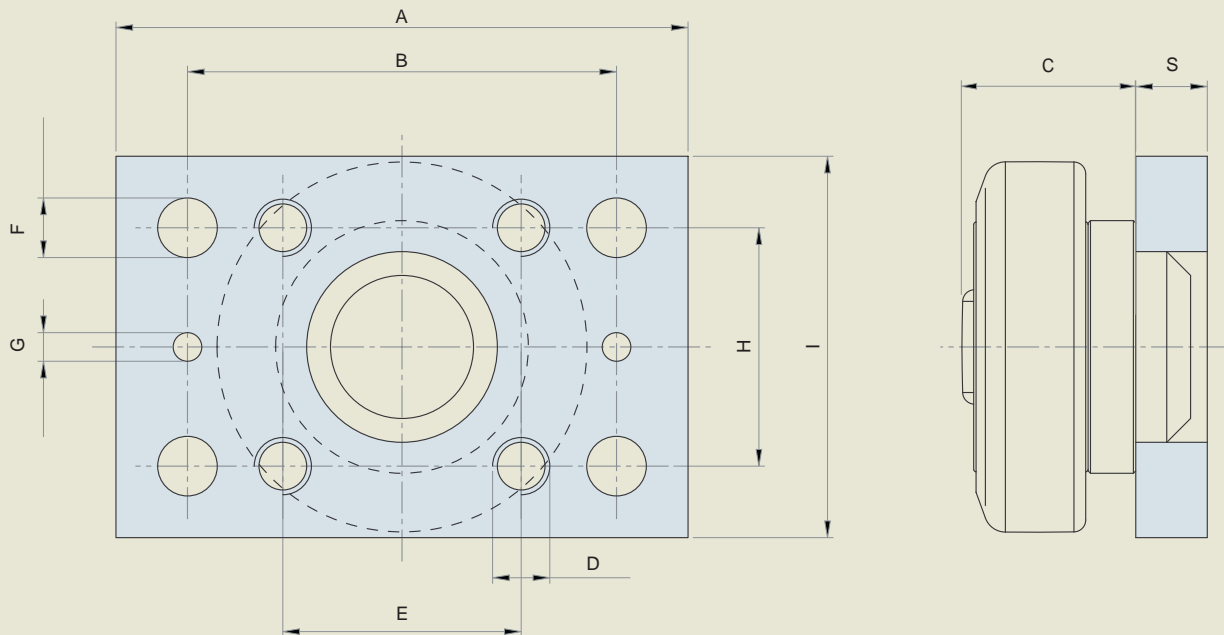


METRIC FLANGE WELDMENTS FOR U-PROFILES

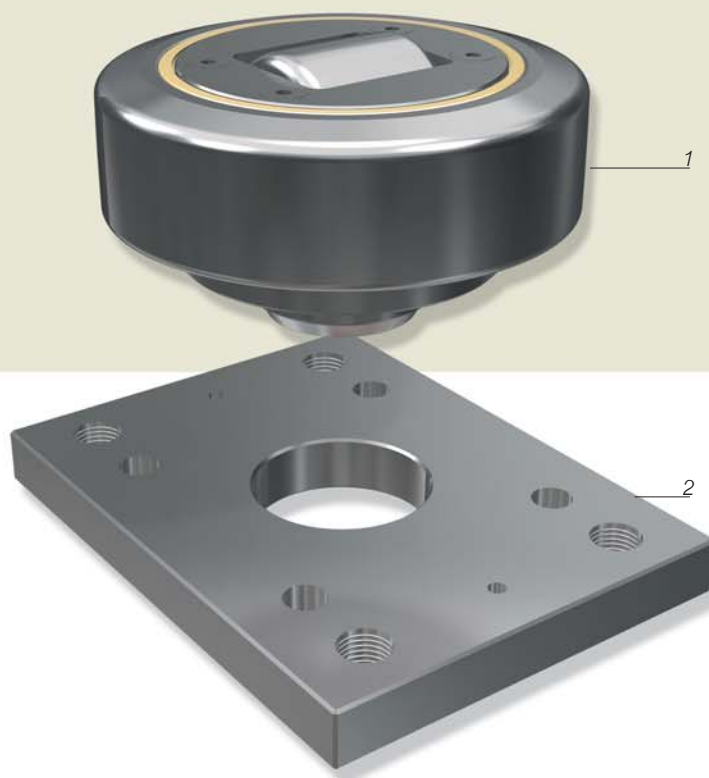


IN STOCK ITEM

Part Number	Bearing Number	Plate Number	A	B	C	D	E	F	G	H	I	S	PROFILE
			mm	mm	mm	mm	mm	mm	mm	mm	mm	mm	
FW10M-4053	CF4.053-53	PL10M	90	70	27	M8	40	8.5	6	30	50	10	53U
FW20M-4054	CF4.054-62	PL20M	100	80	30.5	M10	40	10.5	6	40	60	10	2890
FW30M-4055	CF4.055-70	PL30M	120	90	36	M12	50	12.5	6	50	80	15	2867
FW40M-4056	CF4.056-78	PL40M	120	90	36.5	M12	50	12.5	6	50	80	15	2810
FW50M-4058	CF4.058-88	PL50M	160	120	44	M16	60	17	6	60	100	20	2811
FW60M-4061	CF4.061-108	PL60M	180	140	55	M16	80	17	6	80	120	20	2862
FW60M-4062	CF4.062-123	PL60M	180	140	56	M16	80	17	6	80	120	20	2891
FW70M-4063	CF4.063-149	PL70M	200	160	58.8	M16	100	17	6	100	150	20	2757
FW70M-4011	CF4.011-149	PL70M	200	160	67	M16	100	17	6	100	150	20	2757

METRIC FLANGE WELDMENTS FOR U-PROFILES

-
1. *COMBINATION BEARING*
 2. *FLANGEPLATE*
-



Flange weldments allow "weld-free" bearing installation at the jobsite. They are shipped with the bearing pre-welded to the plate and become a "bolt-on" adder for your handling unit. Flange weldments then allow for easy adjustment by simply loosening the attaching bolts and slipping a shim set behind the plate and re-tightening. Shims are available in 1.0mm and 0.5mm thicknesses.

Shim part numbers are as follows:

Plate 1.0mm/0.5mm

PL10M T100015/16

PL20M T100017/18

PL30M T100019/20

PL40M T100019/20

PL50M T100023/24

PL60M T100025/26

PL70M T100027/28

Shims are ordered as a 'set' which includes two shims - enough for one plate.