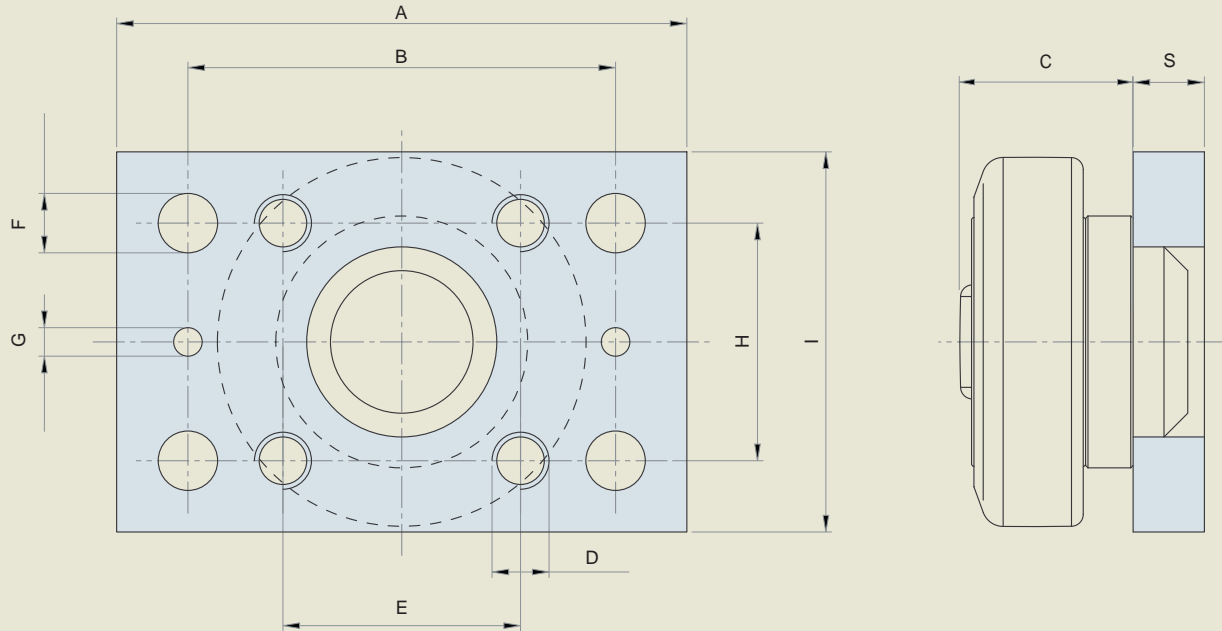


IMPERIAL FLANGE WELDMENTS FOR U-PROFILES



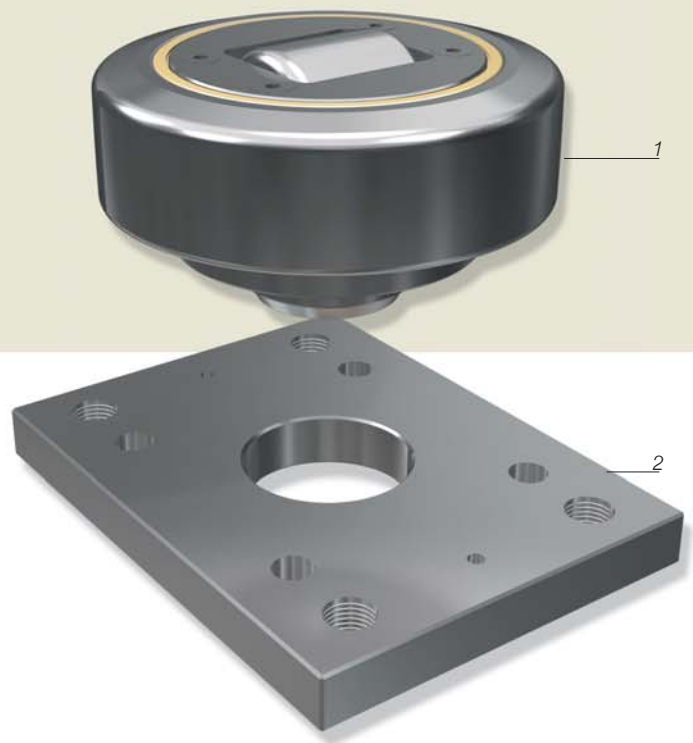
IN STOCK ITEM

Part Number	Bearing Number	Plate Number	A	B	C	D	E	F	G	H	I	S	PROFILE
			inch	mm	mm	inch	mm	inch	inch	mm	inch	inch	
FW10-4053	CF4.053-53	PL10	3-9/16	70	27	5/16	40	11/32	1/4	30	2	3/8	53U
FW20-4054	CF4.054-62	PL20	4	80	30.5	3/8	40	13/32	1/4	40	2-3/8	3/8	2890
FW30-4055	CF4.055-70	PL30	5	90	36	1/2	50	17/32	1/4	50	3-5/32	5/8	2867
FW40-4056	CF4.056-78	PL40	5	90	36.5	1/2	50	17/32	1/4	50	3-5/32	5/8	2810
FW50A-4058*	CF4.058-88	PL50A*	5	N/A	44	5/8	90	N/A	N/A	90	5	3/4	2811
FW50B-4058	CF4.058-88	PL50B	6-5/16	120	44	5/8	60	21/32	1/4	60	4	3/4	2811
FW60-4061	CF4.061-108	PL60	7-1/8	140	55	5/8	80	21/32	1/4	80	5	3/4	2862
FW60SI-4061*	CF4.061-108	PL60SI*	5	N/A	55	5/8	80	N/A	N/A	80	5	3/4	2862
FW60-4062	CF4.062-123	PL60	7-1/8	140	56	5/8	80	21/32	1/4	80	5	3/4	2891
FW60SI-4062*	CF4.062-123	PL60SI*	5	N/A	56	5/8	80	N/A	N/A	80	5	3/4	2891
FW70-4063	CF4.063-149	PL70	8	160	58.8	5/8	100	21/32	1/4	100	6	3/4	2757
FW70-4011	CF4.011-149	PL70	8	160	67	5/8	100	21/32	1/4	100	6	3/4	2757

*PL50A and PL60SI are square plates containing threaded holes only.

IMPERIAL FLANGE WELDMENTS FOR U-PROFILES

-
1. COMBINATION BEARING
 2. FLANGEPLATE
-



Flange weldments allow "weld-free" bearing installation at the jobsite. They are shipped with the bearing pre-welded to the plate and become a "bolt-on" adder for your handling unit. Flange weldments then allow for easy adjustment by simply loosening the attaching bolts and slipping a shim set behind the plate and re-tightening. Shims are available in 1.0mm and 0.5mm thicknesses.

Shim part numbers are as follows:

Plate 1.0mm/0.5mm
 PL10 T100015/16
 PL20 T100017/18
 PL30 T100019/20
 PL40 T100019/20
 PL50A T100023/24
 PL50B T100023M/24M
 PL60 T100025/26
 PL60SI T100025/26
 PL70 T100027/28

Shims are ordered as a 'set' which includes two shims - enough for one plate.

