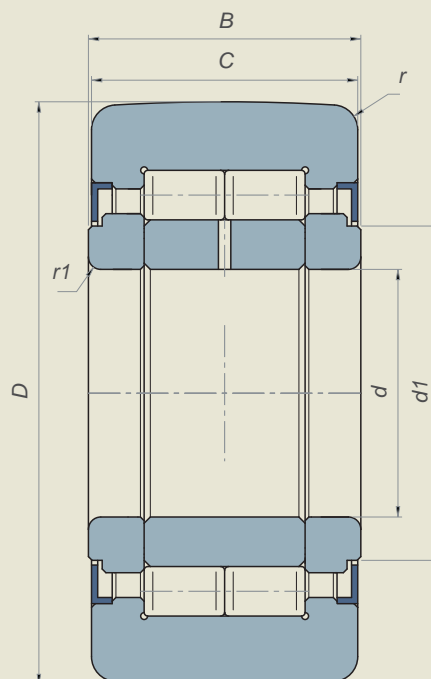


NUTR TRACK ROLLERS

The main characteristic of this series of rollers is the high thickness of the outer ring, which is suitable to bear high specific pressures and the thrusts deriving from the use of these bearings as pressure rollers, cam followers, conveyor belt rollers, bearings for fork lift masts.

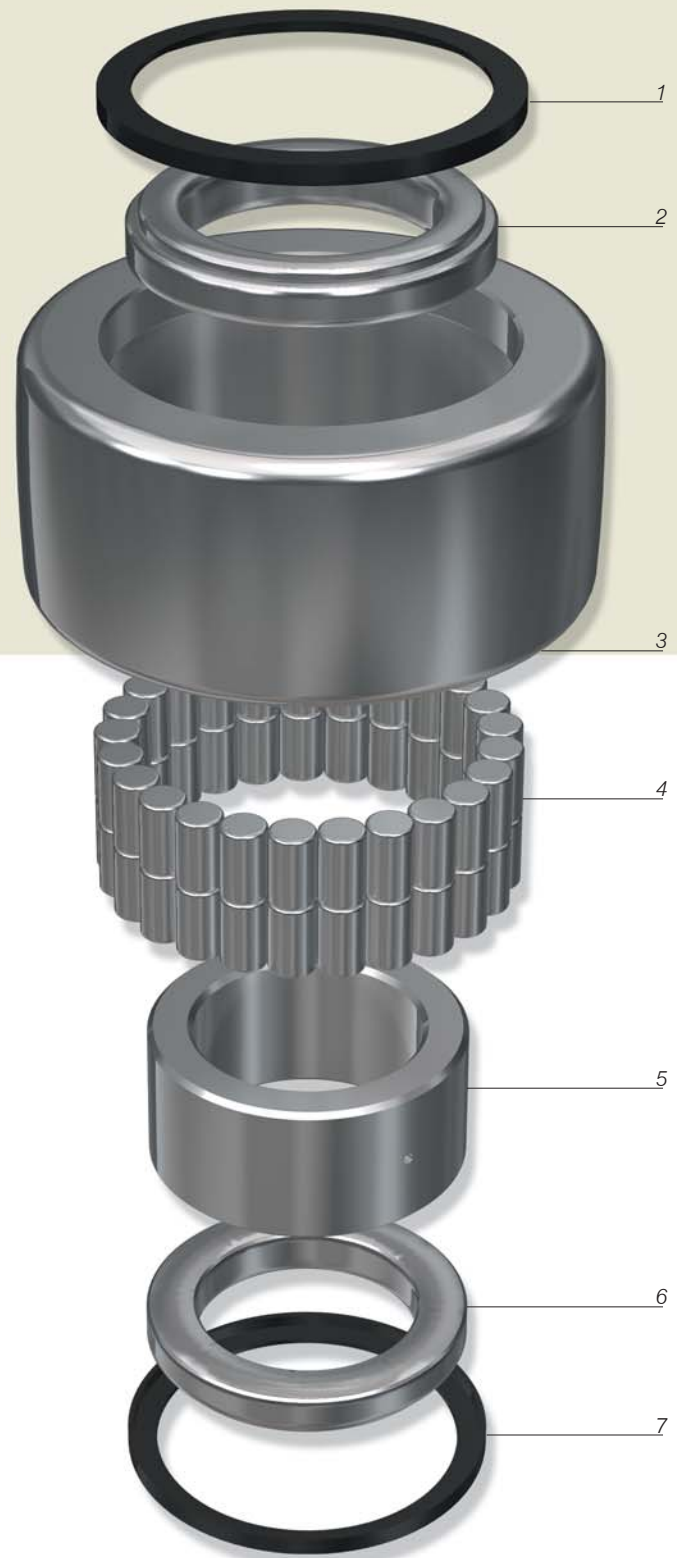


	Part #	d mm	D mm	B mm	C mm	d_1 mm	r min. mm	r_1 min. mm	C_w KN	C_{ow} KN	Max speed RPM min ⁻¹
	NUTR 15-35	15	35	19	18	20	0,6	0,3	15	16,8	6500
STOCK ITEM	NUTR 17-40	17	40	21	20	22	1	0,5	18,4	22,6	5500
	NUTR 15-42	15	42	19	18	20	0,6	0,3	18,1	21,9	6500
	NUTR 17-47	17	47	21	20	22	1	0,5	21,3	28	5500
	NUTR 20-47	20	47	25	24	27	1	0,5	28	35	4200
	NUTR 20-52	20	52	25	24	27	1	0,5	31,5	41	4200
STOCK ITEM	NUTR 25-52	25	52	25	24	31	1	0,5	29	37,5	3400
	NUTR 25-62	25	62	25	24	31	1	0,5	35,5	50	3400
STOCK ITEM	NUTR 30-62	30	62	29	28	38	1	0,5	40	50	2600
	NUTR 30-72	30	72	29	28	38	1	0,5	47,5	64	2600
STOCK ITEM	NUTR 35-72	35	72	29	28	44	1,1	0,6	44,5	60	2100
	NUTR 35-80	35	80	29	28	44	1,1	0,6	51	72	2100
STOCK ITEM	NUTR 40-80	40	80	32	30	51	1,1	0,6	55	75	1600
	NUTR 45-85	45	85	32	30	55	1,1	0,6	56	78	1400
STOCK ITEM	NUTR 40-90	40	90	32	30	51	1,1	0,6	66	95	1600
	NUTR 45-100	45	100	32	30	55	1,1	0,6	71	107	1400
	NUTR 50-110	50	110	32	30	60	1,1	0,6	76	120	1300
STOCK ITEM	NUTR 55-120	55	120	36	34	65	1.1	0.6	105	125	1300
	C_w Dynamic load								C_{ow} Static load		



NUTR TRACK ROLLERS

-
1. SEAL SHEET
 2. SUPPORT THRUST RING
 3. OUTER RING
 4. CYLINDRICAL ROLLERS
 5. INNER RING
 6. SUPPORT THRUST RING
 7. SEAL SHEET
-



Other important features of these bearings are:

- Outer ring with double border of the rollers obtained entirely and accurately grinded to allow the roller to bear loads with axial components. The ring is usually cambered on the outer part, in order to improve working condition with heavy loads and to prevent the concentration of load onto side bands of the raceway.
- Inner ring with holes and channels for the inflow of lubricants.
- Grinded thrust rings, which form a labyrinth protection system, along with steel sealing sheets forced on the outer ring. One of the lateral thrust rings can be a closed thrust ring, to allow the fixing of the rollers at the edge of the shaft.
- Full-complement of grinded flat head rollers.